





அலுவலகப் படி

Planning Permission No.  
C/13186/37 B/L/2021  
**APPROVED**  
Subject to conditions mentioned in this office  
Letter No. P/Phn/54(00)/616/2021 Dated 12-20-21  
For Member Secretary  
Chennai Metropolitan Development Authority  
Chennai-600 008.  
This approval is valid only after Building Permit is issued by the concerned Local Body.

The Planning Permission issued under New Rule  
Regulation, 2019 is subject to final outcome of the  
Municipal Corporation of Chennai (MCC) and WMP (M)  
No. 8948 of 2019 and WMP (M)  
No. 12 & 493 of 2019.

REVISED PLAN SHOWING THE  
PROPOSED CONSTRUCTION OF  
BLOCKS; SCHOOL BLOCK  
COMPRISING OF GROUND FLOOR + 3  
FLOORS WITH 15.10M HEIGHT AND  
AUDITORIUM BLOCK COMPRISING OF  
GROUND FLOOR + 1ST FLOOR WITH  
16.74M HEIGHT AT RAJIVGANDHI  
SALAI (OLD MAHABALIPURAM ROAD),  
SEMMANCHERI, CHENNAI  
COMPRISED IN S.NO. 198, 197A,  
197B, 200/1, 201, 202/1, 203/1, 203/2,  
203/3A1, 211/1, 213/1 OF  
SEMMANCHERI VILLAGE, WITH IN  
THE LIMIT OF GREATER CHENNAI  
CORPORATION

COLOUR INDEX

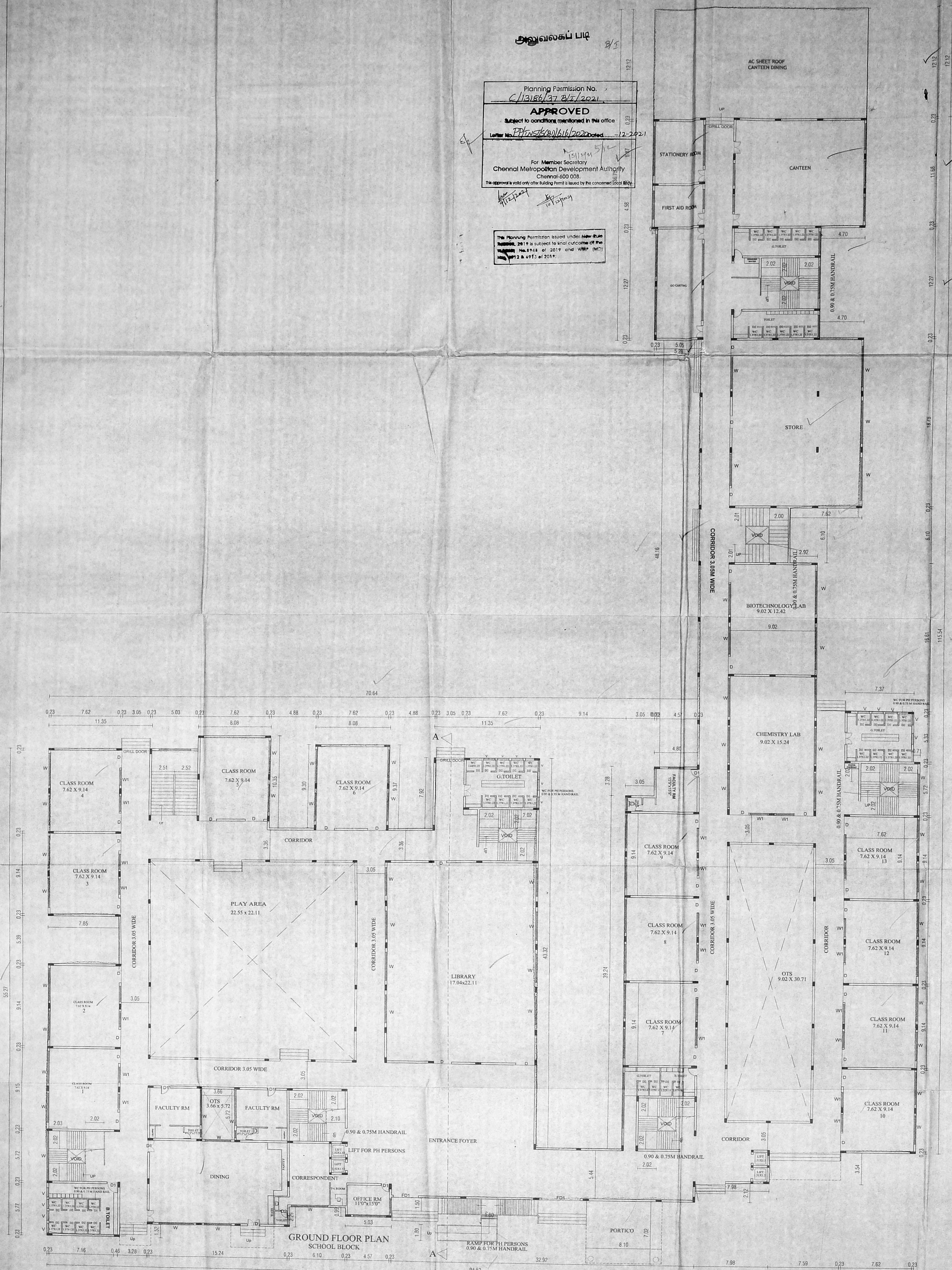
PROPOSAL  
BOUNDARY  
ROADS

**SPECIFICATION**

RIVER SAND FILLING  
POC 1:4.6 USING 20MM, 25MM JELLY  
ROC 1:2.4 USING RIVER SAND, 20mm SIZE JELLY  
BRICK WORK IN CEMENT MORTAR 1:5  
DOORS & WINDOWS USING COMPERSABLE MATERIAL

**JOINERIES**

FD	DOOR	2.75 x 2.10
D	DOOR	2.0 x 2.10
D1	DOOR	1.20 x 2.10
D2	DOOR	0.76 x 2.10
W	WINDOW	3.10 x 1.50
W1	WINDOW	1.80 x 1.50
V	VENTILATER	0.91 x 0.61



SCALE 1: 150

**GROUND FLOOR PLAN**

**DR. RAJAZHEE J. JOHNSON, B.E., M.A., M.P.L.A., P.E.**  
Managing Trustee  
Collegiate Institute of Science and Technology Trust

**DR. RAJAZHEE J. JOHNSON, B.E., M.A., M.P.L.A., P.E.**  
Chairperson  
Collegiate Institute of Science and Technology Trust

OWNER'S SIGNATURE

*[Signature]*  
D.A. SHOBA  
Structural Engineer Grade - I (SE)  
No. 90, First Floor, Eastwoodman Street,  
Kottur, Chennai-600 085.

STRUCTURAL ENGINEER

*[Signature]*  
S. EBIN HARRISON  
Registered Architect  
No. 15, RAJAGIRI ROAD,  
T. Nagar, Chennai - 600 017.

REGISTERED ARCHITECT



அனுவகக் படி

Planning Permission No. C/12/186/376/2021  
**APPROVED**  
 Subject to conditions mentioned in this office  
 Letter No. P.P./12/186/376/2021 dated 12.2.2021  
 For Member Secretary  
 Chennai Metropolitan Development Authority  
 Chennai-600 008.  
 This approval is valid only after Building Permit is issued by the concerned local body.

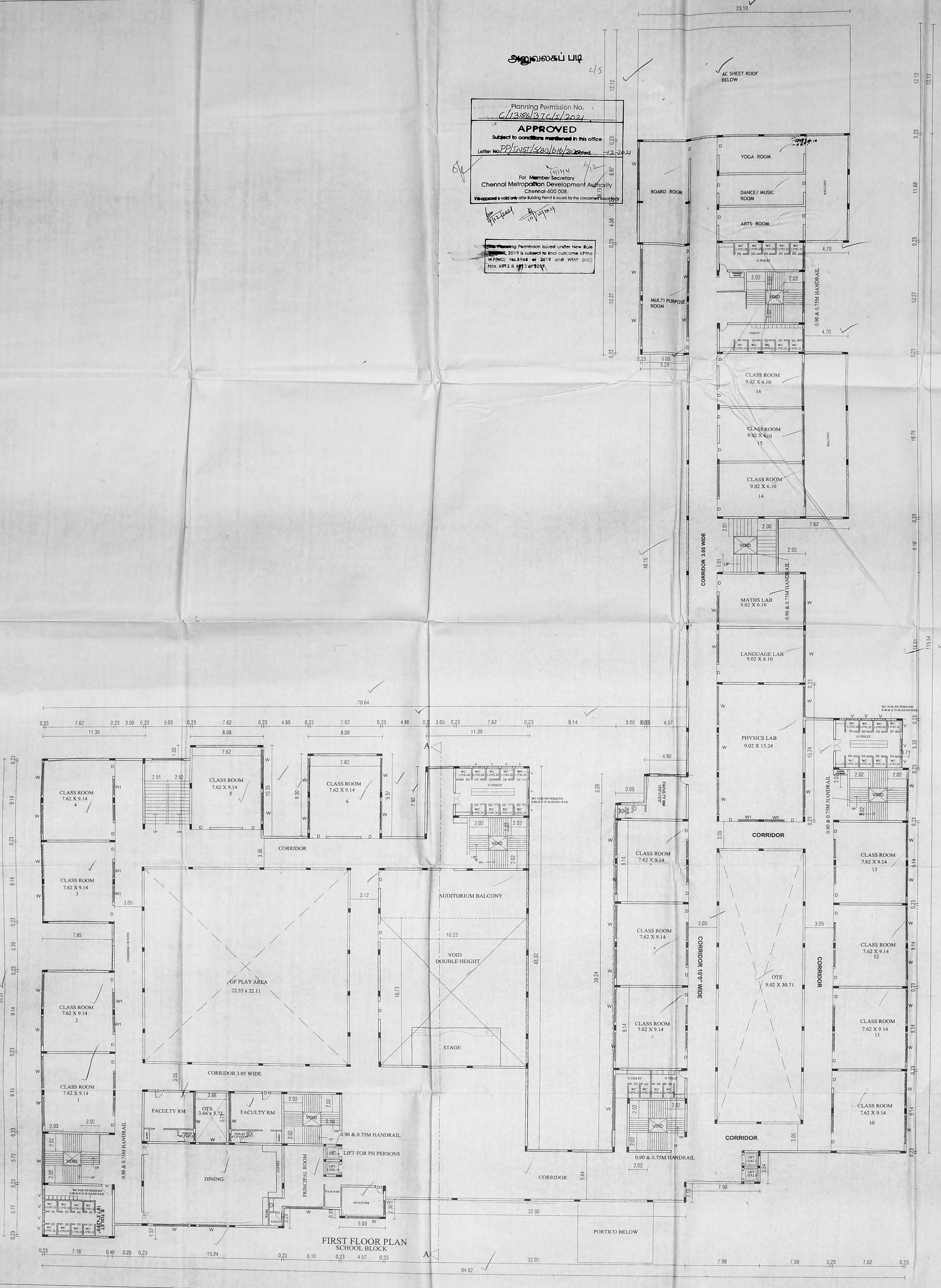
This Planning Permission issued under New Rule 2019 is subject to final outcome of the W.P.(MD) Nos.8948 of 2019 and WMP (MD) Nos. 6912 & 6913 of 2019.

REVISED PLAN SHOWING THE PROPOSED CONSTRUCTION OF 2 BLOCKS, SCHOOL BLOCK COMPRISING OF GROUND FLOOR + 3 FLOORS WITH 15.10M HEIGHT AND AUDITORIUM BLOCK COMPRISING OF GROUND FLOOR + 1ST FLOOR WITH 16.74M HEIGHT AT RAJIV GANDHI SALAI (OLD MAHABALIPURAM ROAD), SEMMANCHERI, CHENNAI COMPRISED IN S.NO. 196, 197/1, 197/2, 200/1, 201, 202/1, 203/2/3, 203/3/1, 211/1, 213/1 OF P.L.N.T. 12.02.2020 SEMMANCHERY VILLAGE WITH IN THE LIMIT OF GREATER CHENNAI CORPORATION

**COLOUR INDEX**  
 PROPOSAL  
 BOUNDARY  
 ROADS

**SPECIFICATION**  
 RIVER SAND FILLING  
 PCC 1:4:8 USING 20MM, 25MM JELLY  
 RCC 1:2:4 USING RIVER SAND, 20mm SIZE JELLY  
 BRICK WORK IN CEMENT MORTAR 1:5  
 DOORS & WINDOWS USING COMPERSABLE MATERIAL

**JOINERIES**  
 D DOOR 2.0 x 2.10  
 D1 DOOR 1.20 x 2.10  
 D2 DOOR 0.76 x 2.10  
 W WINDOW 3.10 x 1.50  
 W1 WINDOW 1.80 x 1.50  
 V VENTILATER 0.91 x 0.61



SCALE 1: 150

FIRST FLOOR PLAN

Dr. SHARAZENA JOHNSON, A.E., M.A., M.P.A.,  
 Managing Trustee  
 Siddhanta Institute of Science and Technology Trust

Dr. SHARAZENA JOHNSON, A.E., M.A., M.P.A.,  
 Managing Trustee  
 Siddhanta Institute of Science and Technology Trust

OWNERS SIGNATURE

*[Signature]*  
 Dr. ASHOKA  
 Structural Engineer Grade - (I) (SE)  
 REG. NO. RAJ/GR/19/07/2003  
 Plot No: 11, Vignesh Nagar Estate,  
 Kuddipakkam, Chennai - 600 091.

STRUCTURAL ENGINEER

*[Signature]*  
 S. EBIN HARRISON  
 Registered Architect G.O. (1974)  
 REG. NO. RAJ/GR/19/07/2003  
 Plot No: 11, Vignesh Nagar Estate,  
 Kuddipakkam, Chennai - 600 091.

REGISTERED ARCHITECT



அலுவலகப் பார்

REVISED PLAN SHOWING THE PROPOSED CONSTRUCTION OF 2 BLOCKS, SCHOOL BLOCK COMPRISING OF GROUND FLOOR FLOORS WITH 15.10M HEIGHT AND AUDITORIUM BLOCK COMPRISING OF GROUND FLOOR + 1ST FLOOR WITH 16.74M HEIGHT AT RAJIVGANDHI SALAI (OLD MAHALIPURAM ROAD), SEMMANCHERI, CHENNAI 600 102  
 COMPRISED IN S.N.O 196 1971-1972, 200/1, 201, 202A, 203, 203/3A1, 211/1, 213/1 OF SEMMANCHERY VILLAGE WITHIN THE LIMIT OF GREATER CHENNAI CORPORATION

Planning Permission No. C/13186/3702/2021  
**APPROVED**  
 Subject to conditions mentioned in this office  
 Letter No. PPL/NS/580/616/2021 -12-2021  
 For Member Secretary  
 Chennai Metropolitan Development Authority  
 Chennai-600 008  
 The approval is valid only after Building Permit is issued by the concerned Local Authority

This Planning Permission issued under New Rule W/CDBR, 2019 is subject to final outcome of W/P/MD Nos.8948 of 2019 and WMP rules Nos. 6912 & 6913 of 2019.

COLOUR INDEX

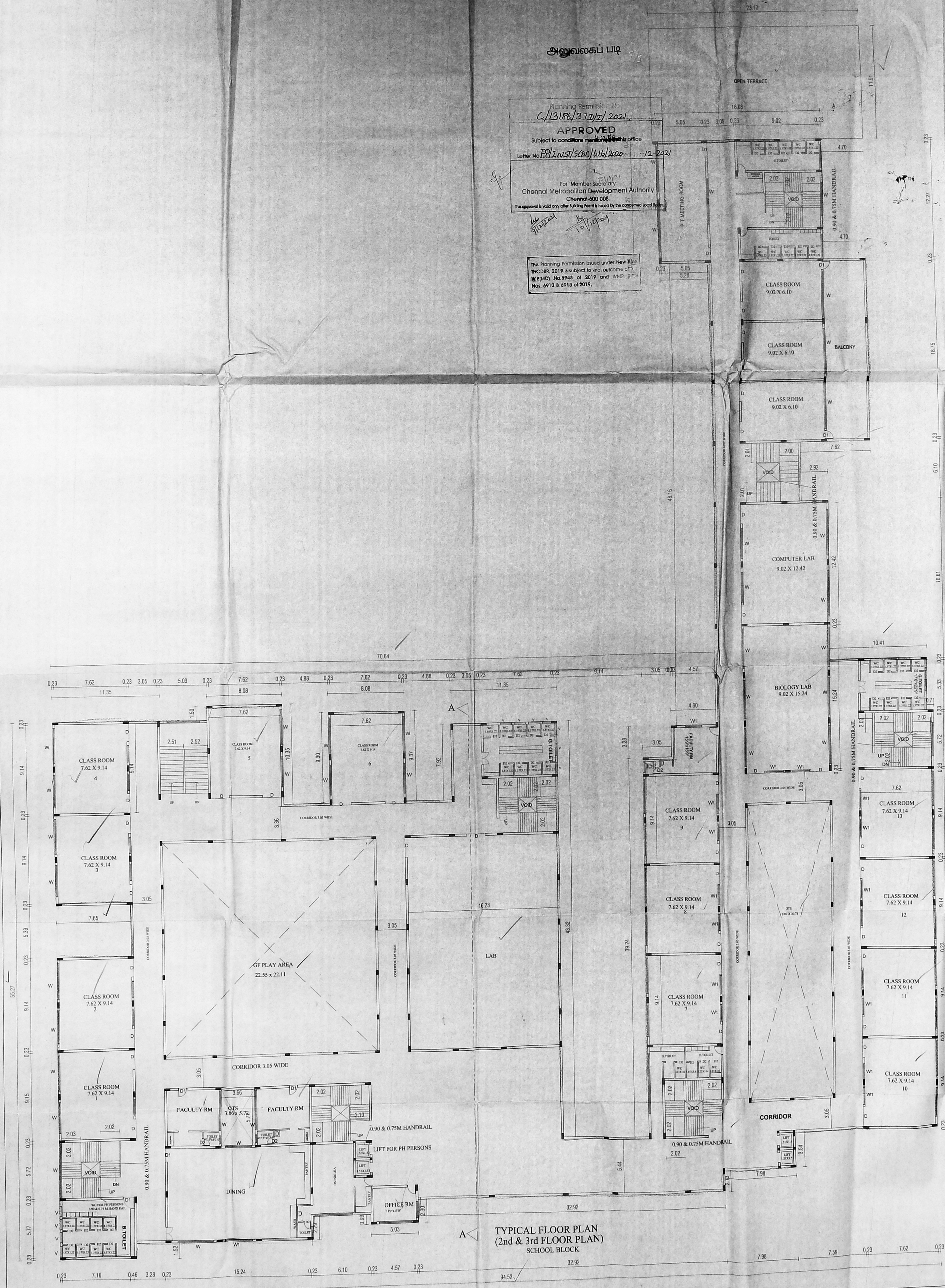
- PROPOSAL
- BOUNDARY
- ROADS

SPECIFICATION

RIVER SAND FILLING  
 PCC 1:4:8 USING 20MM, 25MM JELLY  
 RCC 1:2:4 USING RIVER SAND, 20mm SIZE JELLY  
 BRICK WORK IN CEMENT MORTAR 1:5  
 DOORS & WINDOWS USING COMPERSABLE MATERIAL

JOINERIES

D	DOOR	2.0 x 2.10
D1	DOOR	1.20 x 2.10
D2	DOOR	0.76 x 2.10
W	WINDOW	3.10 x 1.50
W1	WINDOW	1.80 x 1.50
V	VENTILATER	0.91 x 0.61



TYPICAL FLOOR PLAN (2nd & 3rd FLOOR PLAN) SCHOOL BLOCK

TYPICAL FLOOR PLAN (2nd & 3rd FLOOR PLAN)

**D. MARAZEEN JOHNSON** M.A., M.A., P.A.,  
 Managing Trustee  
 Polytechnic Institute of Science and Technology Trust

**D. MARAZEEN JOHNSON** M.A., M.A., P.A.,  
 Chancellor  
 Polytechnic Institute of Science and Technology Trust

OWNER'S SIGNATURE

*(Signature)*  
**D.A. SHOBA**  
 Structural Engineer Grade - I (SE)  
 Reg. No. 21/1900164  
 No. 90, First Floor, Chakravartty Street,  
 Kottur, Chennai-600 085.

STRUCTURAL ENGINEER

*(Signature)*  
**S. EBIN HARRISON**  
 Registered Architect, Gr. I (RA)  
 Reg. No. RA/GR/118/07/1993  
 Plot No. 11, Mahal Nagar East,  
 Madipakkam, Chennai - 600 061.

REGISTERED ARCHITECT



REVISED PLAN SHOWING THE PROPOSED CONSTRUCTION OF BLOCKS: SCHOOL BLOCK COMPRISING OF GROUND FLOOR + 3 FLOORS WITH 15.10M HEIGHT AND AUDITORIUM BLOCK COMPRISING OF GROUND FLOOR + 1ST FLOOR WITH 16.74M HEIGHT AT RAJIVGANDHI SALAI (OLD MAHABALIPURAM ROAD), SEMMANCHERI, CHENNAI COMPRISED IN S.N.O. 1841/2011, 203/2A, 203/3A1, 211/1, 213/1 OF THE LIMIT OF GREATER CHENNAI CORPORATION.

COLOUR INDEX

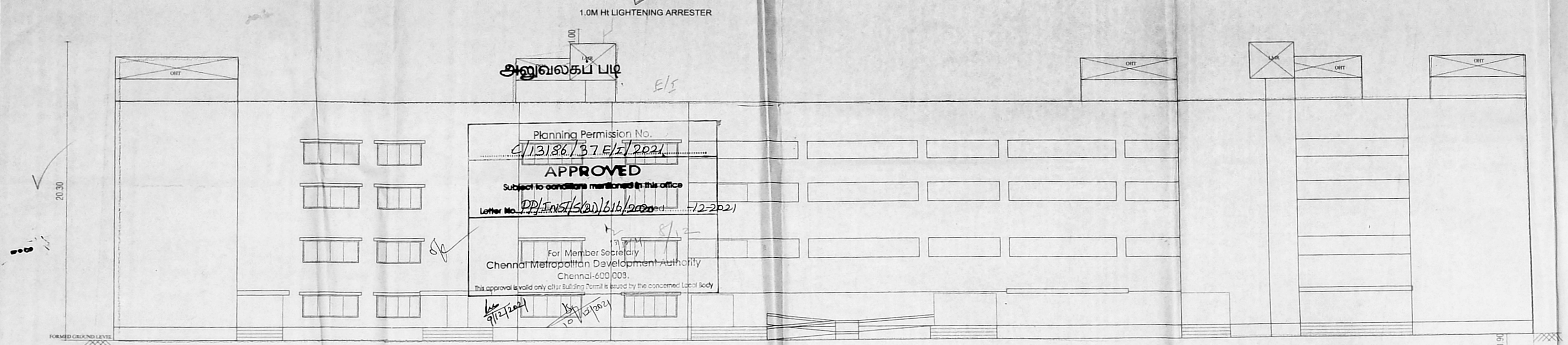
- PROPOSAL
- BOUNDARY
- ROADS

**SPECIFICATION**

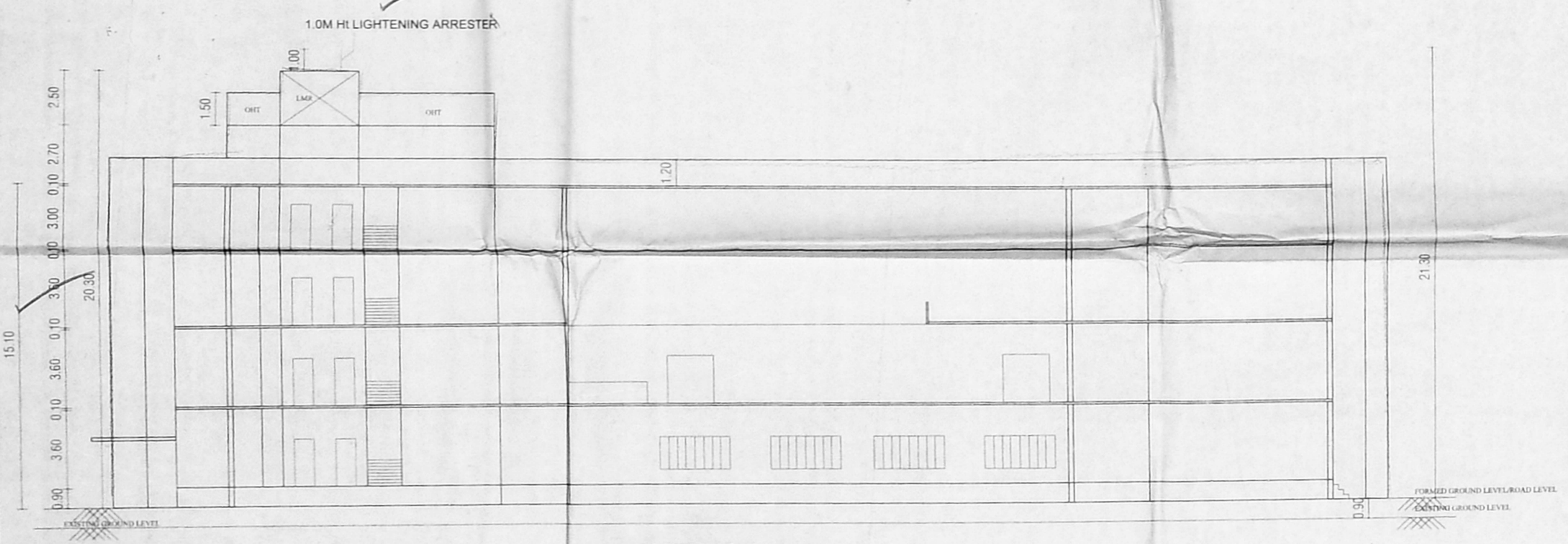
RIVER SAND FILLING  
 RCC 1:4:8 USING 20MM, 25MM JELLY  
 RCC 1:2:4 USING RIVER SAND, 20mm SIZE JELLY  
 BRICK WORK IN CEMENT MORTAR 1:5  
 DOORS & WINDOWS USING COMPENSABLE MATERIAL

**JOINERIES**

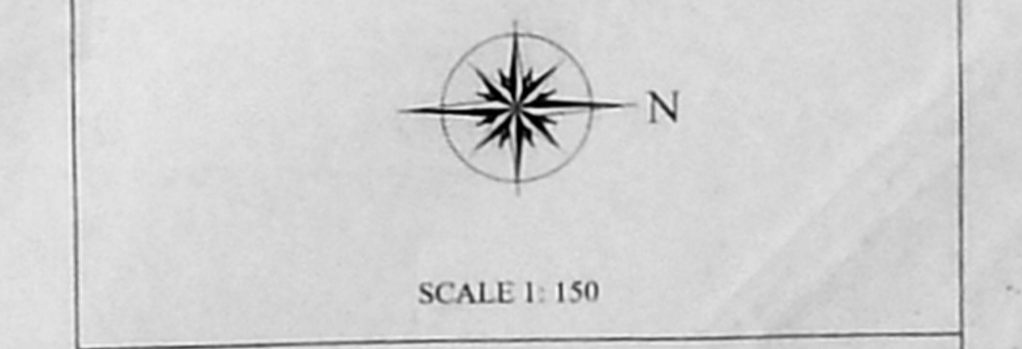
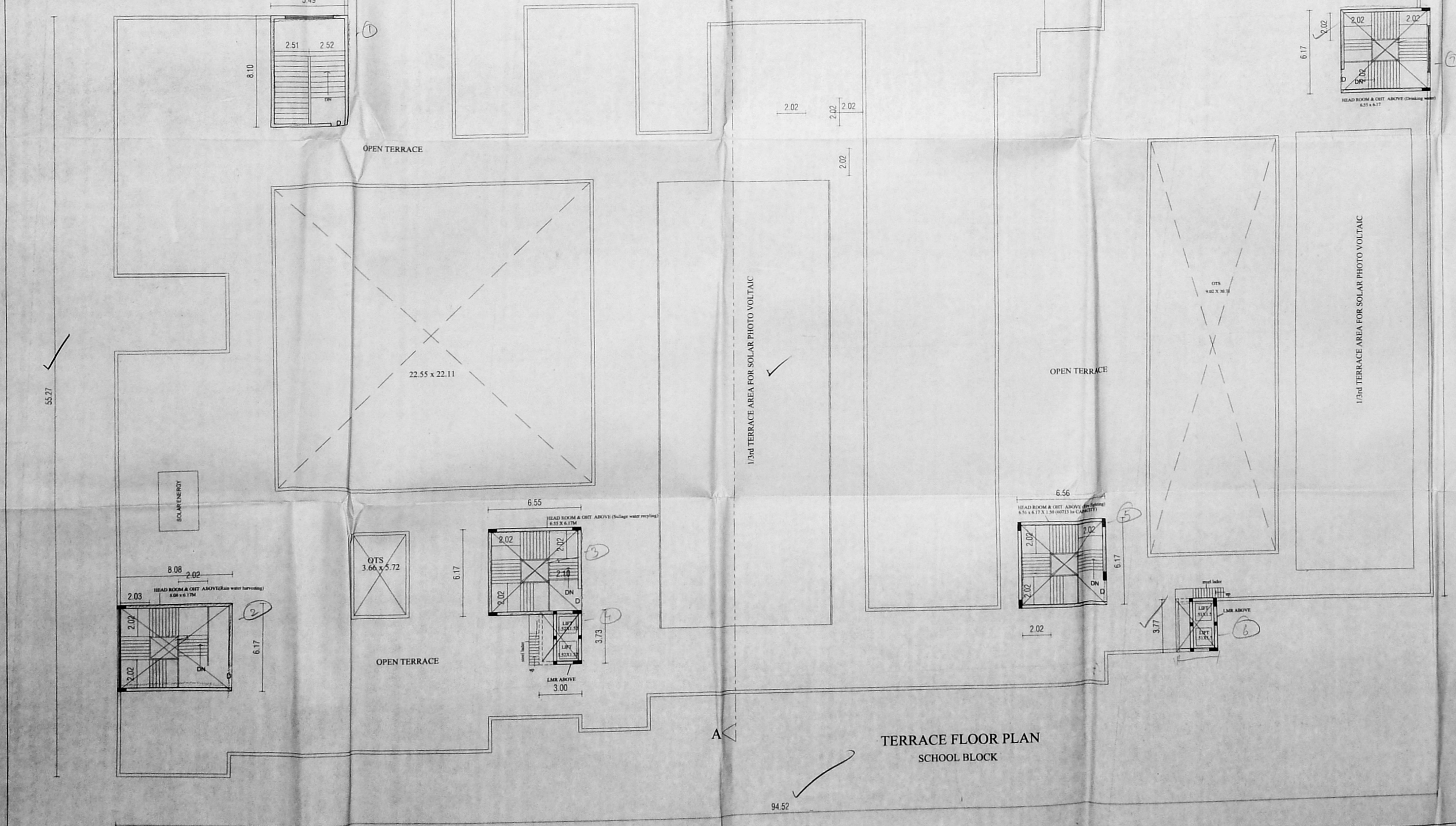
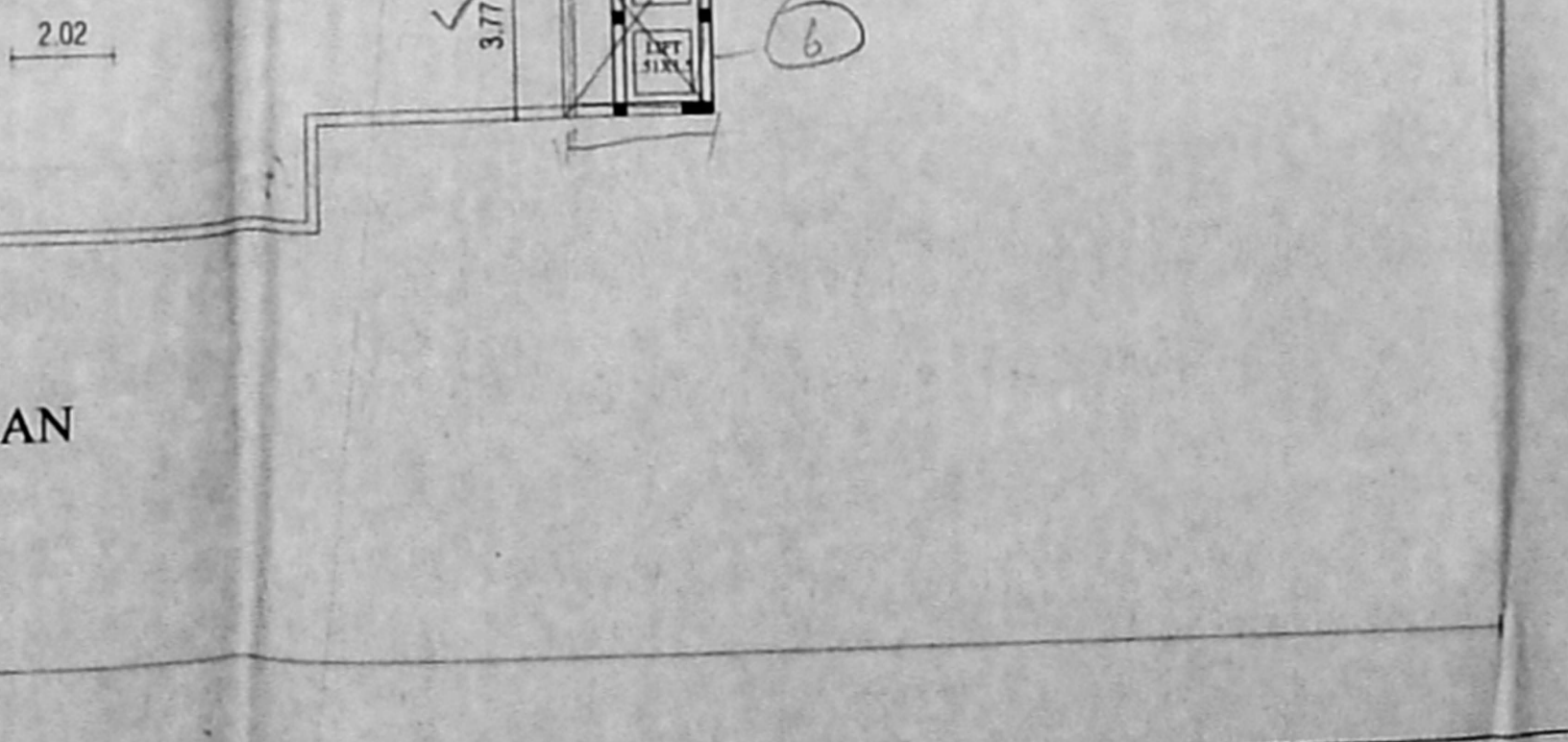
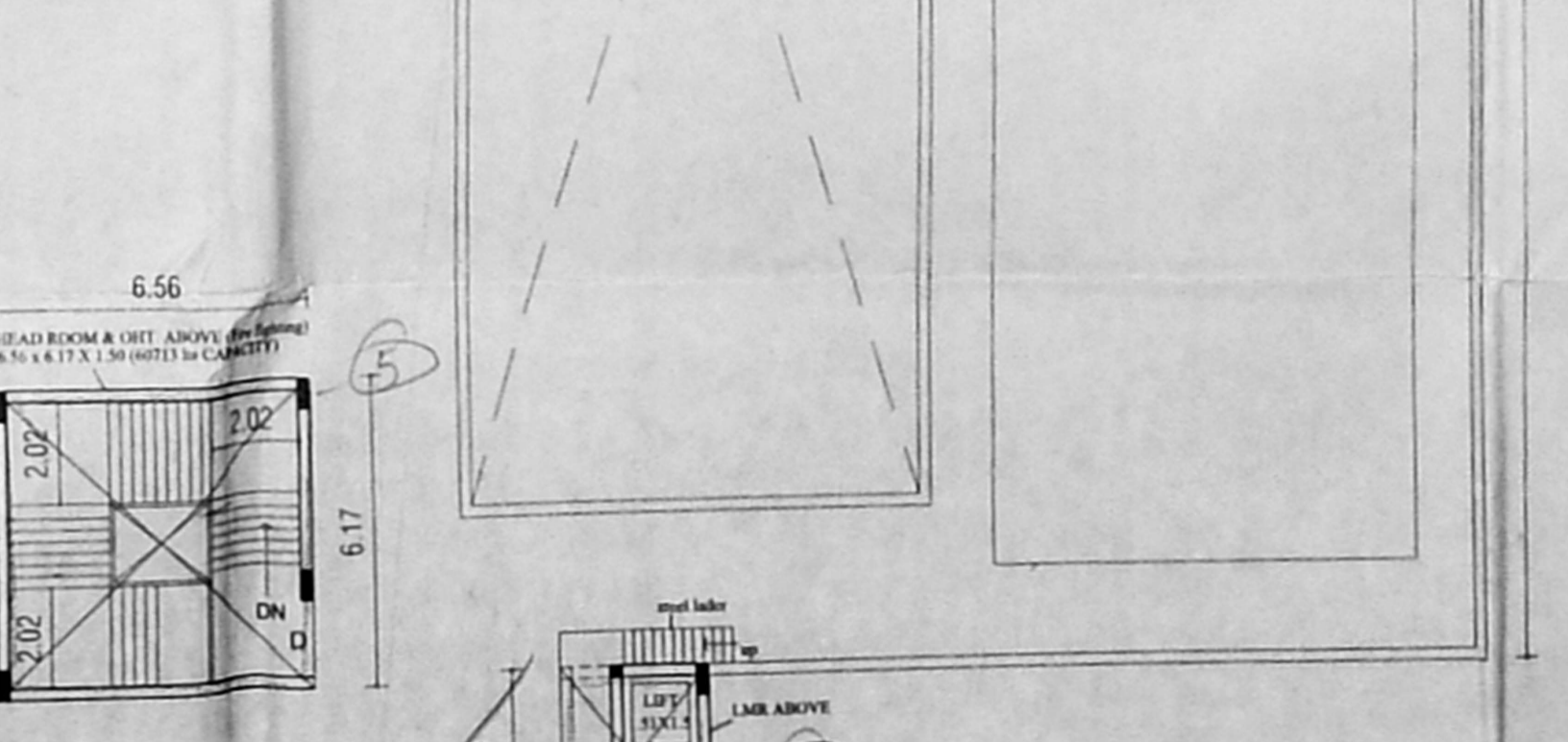
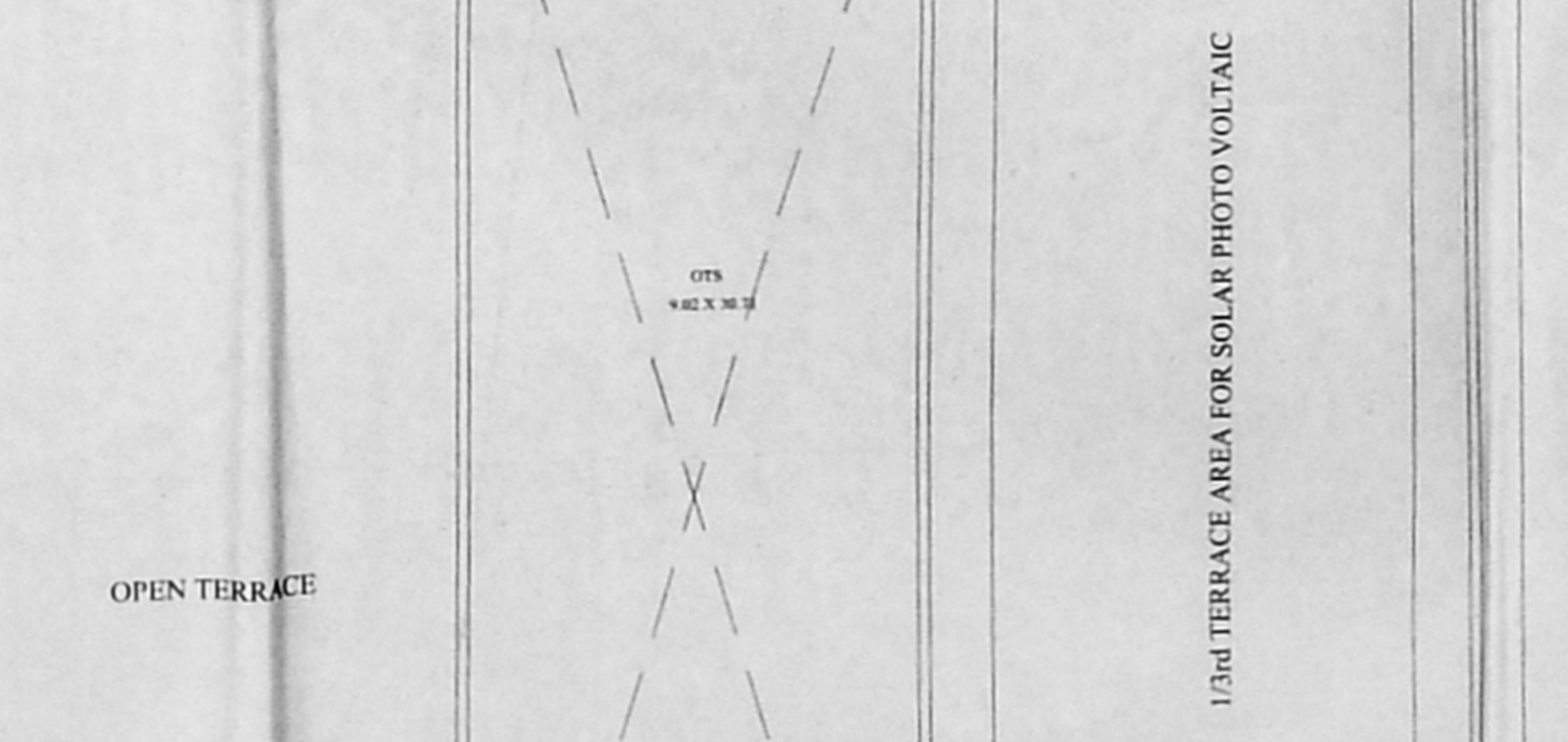
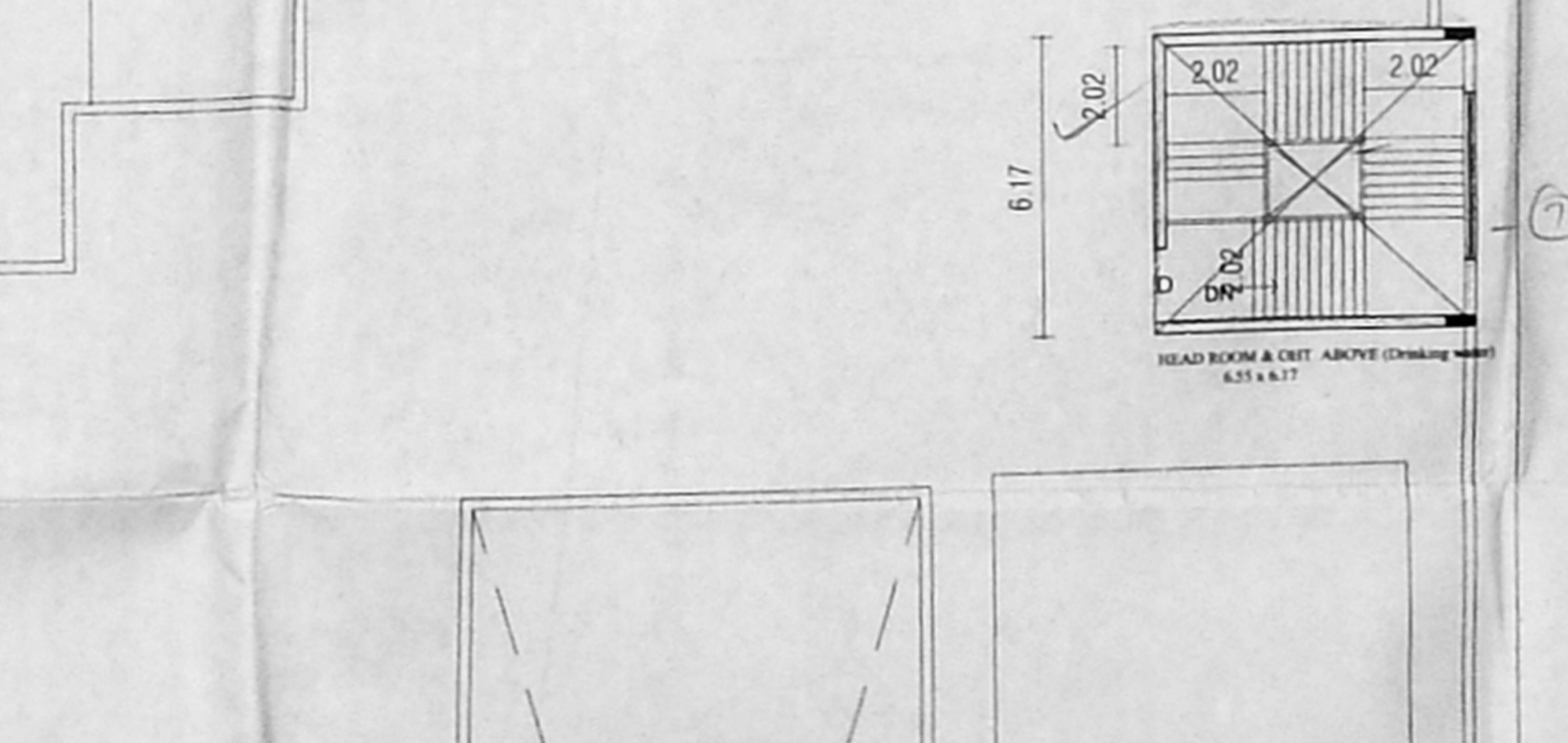
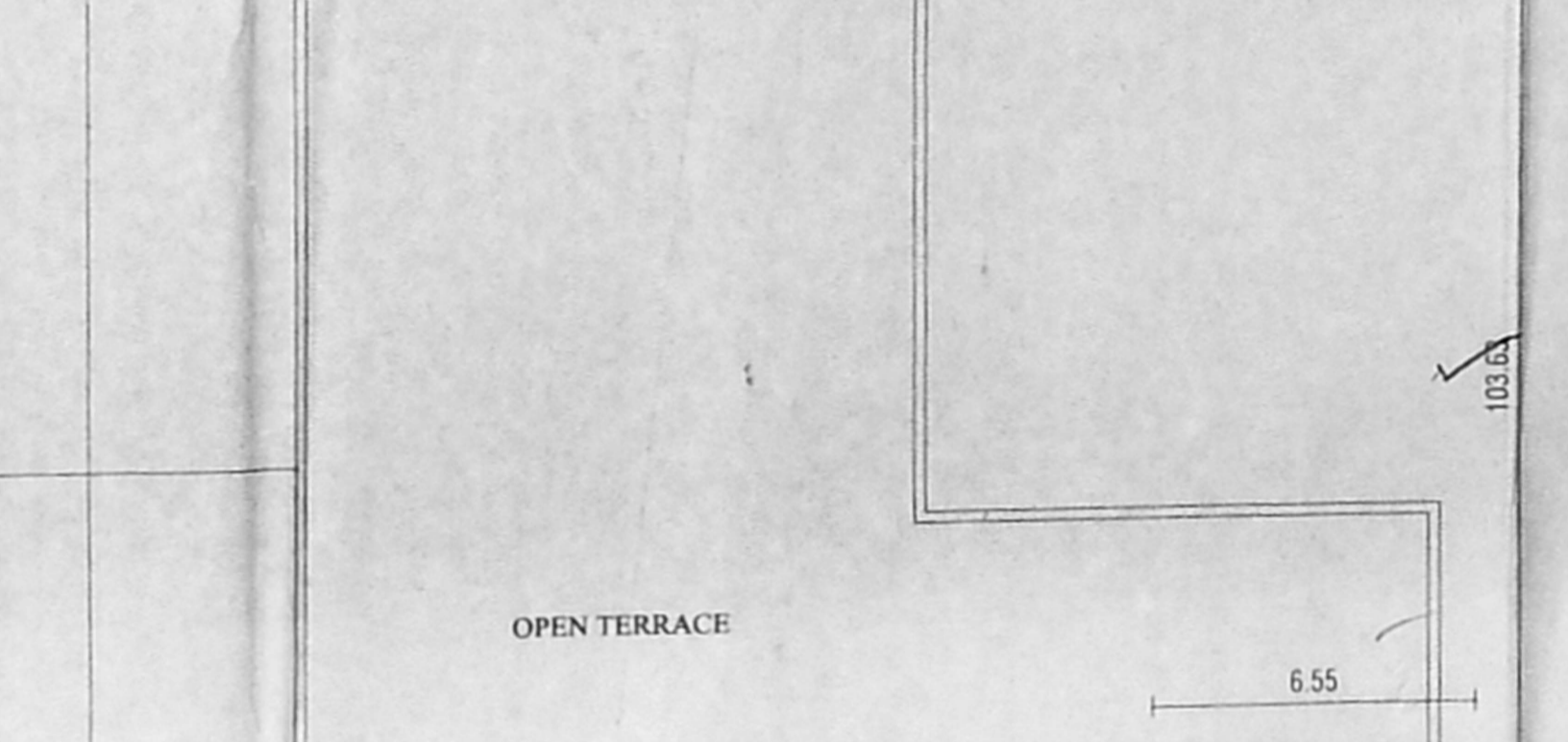
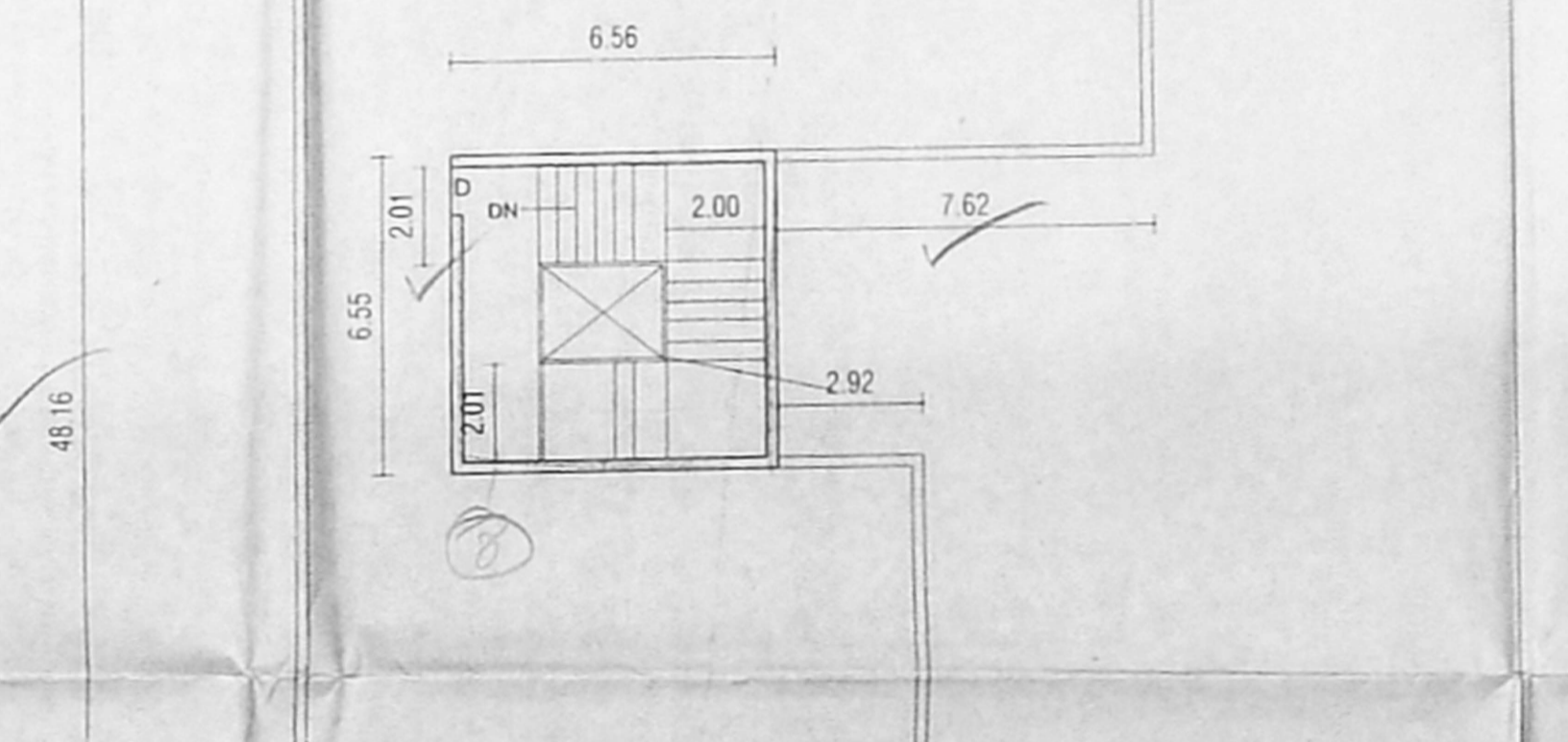
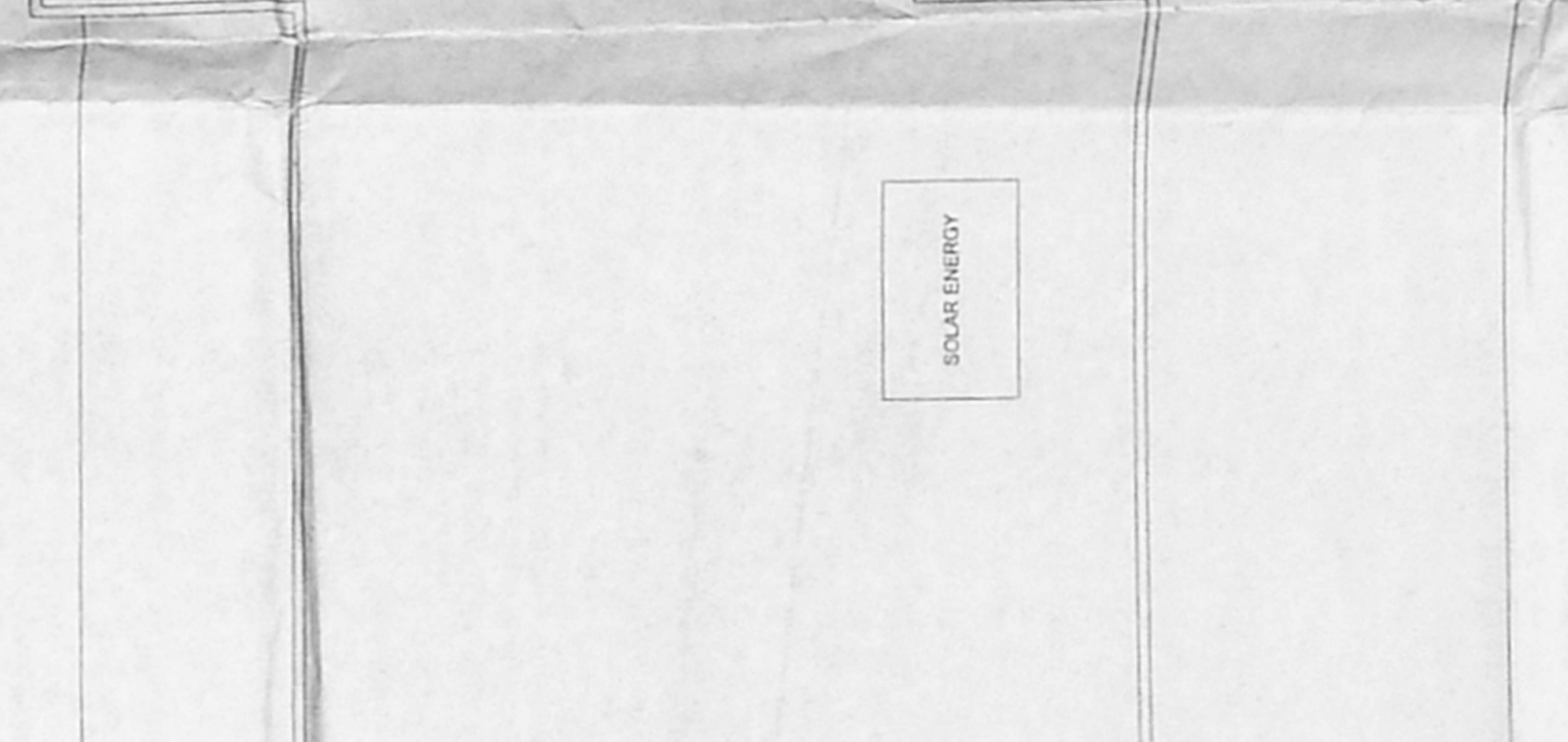
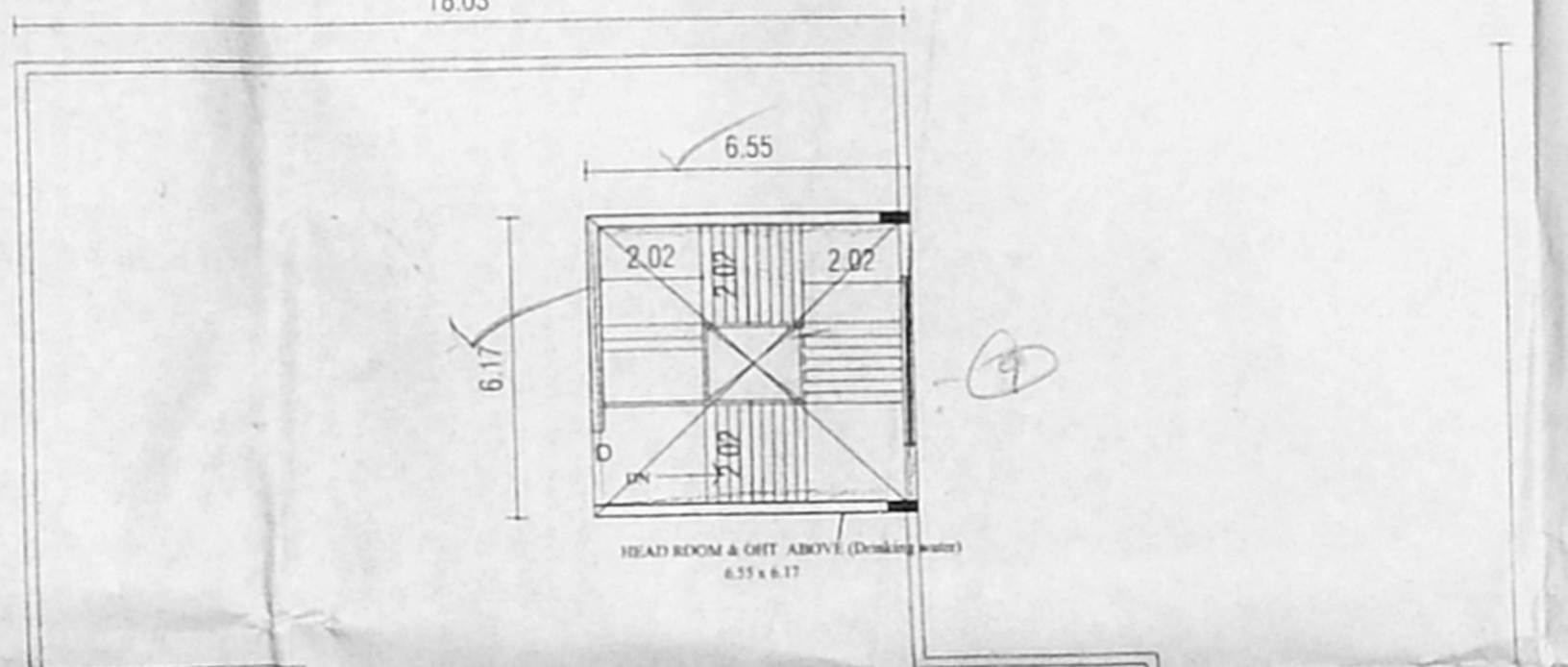
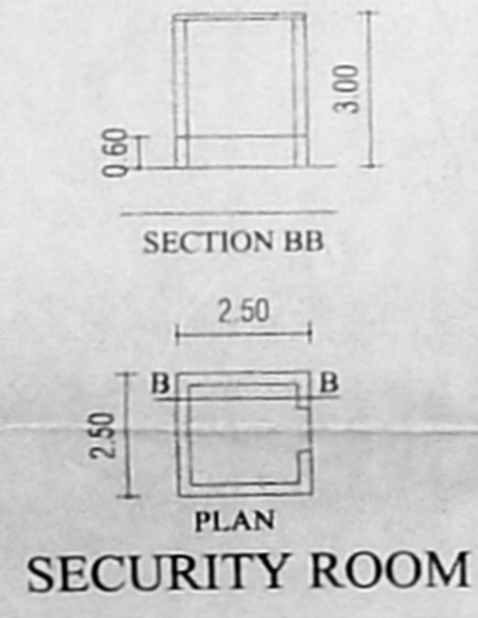
D	DOOR	2.0 x 2.10
D1	DOOR	1.20 x 2.10
D2	DOOR	0.76 x 2.10
W	WINDOW	3.10 x 1.50
W1	WINDOW	1.80 x 1.50
V	VENTILATER	0.91 x 0.91



This Planning Permission issued under New Rule TMC&P, 2019 is subject to final outcome of W.P.(M) Nos. 8948 of 2019 and WMP (M.C.) Nos. 5912 & 6913 of 2019.



SECTION ON AA SCHOOL BLOCK



**Dr. MARAZEENA JOHNSON, B.E., M.A., M.P.A.M.,**  
 Managing Trustee  
 Rajivgandhi Institute of Science and Technology Trust

**Dr. MARAZEENA JOHNSON, B.E., M.A., M.P.A.M.,**  
 Chancellor  
 Rajivgandhi Institute of Science and Technology Trust

OWNER'S SIGNATURE

*[Signature]*

**Dr. A. SHOBA**  
 Structural Engineer - (RSE)  
 Reg. No. RA/30/19807/2004  
 Plot No. 11, Mahal Nagar Estate,  
 Madipakkam, Chennai - 600 081.

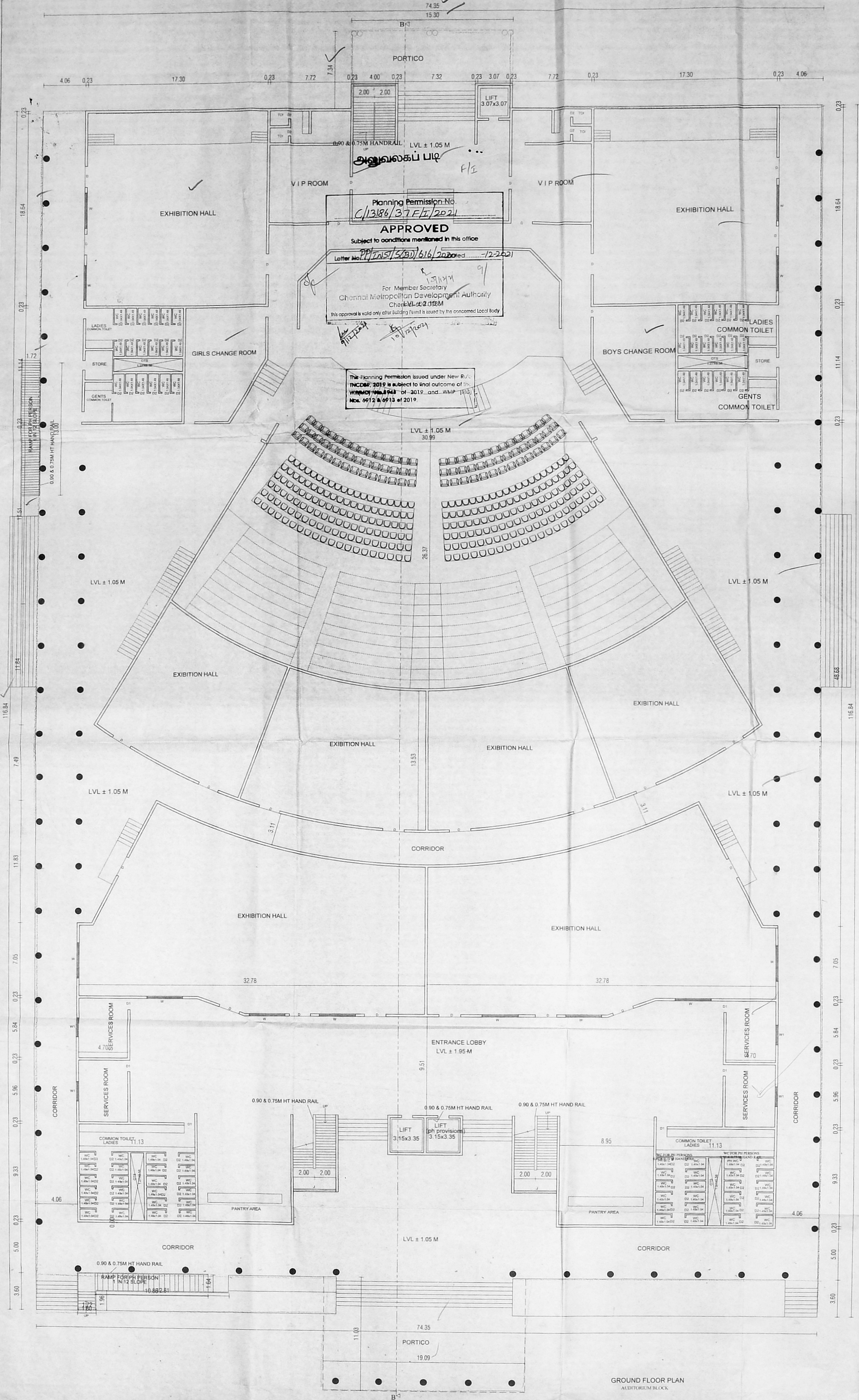
STRUCTURAL ENGINEER

*[Signature]*

**S. EBIN HARRISON**  
 Registered Architect - (RA)  
 Reg. No. RA/30/19807/2004  
 Plot No. 11, Mahal Nagar Estate,  
 Madipakkam, Chennai - 600 081.



சென்னை மாநகராட்சி  
 REVISED PLAN SHOWING THE PROPOSED CONSTRUCTION OF 2 BLOCKS, SCHOOL BLOCK COMPRISING OF GROUND FLOOR + 3 FLOORS WITH 15.10M HEIGHT AND AUDITORIUM BLOCK COMPRISING OF GROUND FLOOR + 1<sup>ST</sup> FLOOR WITH 16.74M HEIGHT AT RAJIVGANDHI SALAI (OLD MAHABALASURAM ROAD) SEMMANCHERI, CHENNAI COMPRISED IN S.NO. 196, 197/1, 197/2, 200/1, 201, 202/1, 203/2A, 203/3A1, 21/1, 21/2, 21/3, 21/4, 21/5, 21/6, 21/7, 21/8, 21/9, 21/10, 21/11, 21/12, 21/13, 21/14, 21/15, 21/16, 21/17, 21/18, 21/19, 21/20, 21/21, 21/22, 21/23, 21/24, 21/25, 21/26, 21/27, 21/28, 21/29, 21/30, 21/31, 21/32, 21/33, 21/34, 21/35, 21/36, 21/37, 21/38, 21/39, 21/40, 21/41, 21/42, 21/43, 21/44, 21/45, 21/46, 21/47, 21/48, 21/49, 21/50, 21/51, 21/52, 21/53, 21/54, 21/55, 21/56, 21/57, 21/58, 21/59, 21/60, 21/61, 21/62, 21/63, 21/64, 21/65, 21/66, 21/67, 21/68, 21/69, 21/70, 21/71, 21/72, 21/73, 21/74, 21/75, 21/76, 21/77, 21/78, 21/79, 21/80, 21/81, 21/82, 21/83, 21/84, 21/85, 21/86, 21/87, 21/88, 21/89, 21/90, 21/91, 21/92, 21/93, 21/94, 21/95, 21/96, 21/97, 21/98, 21/99, 21/100, 21/101, 21/102, 21/103, 21/104, 21/105, 21/106, 21/107, 21/108, 21/109, 21/110, 21/111, 21/112, 21/113, 21/114, 21/115, 21/116, 21/117, 21/118, 21/119, 21/120, 21/121, 21/122, 21/123, 21/124, 21/125, 21/126, 21/127, 21/128, 21/129, 21/130, 21/131, 21/132, 21/133, 21/134, 21/135, 21/136, 21/137, 21/138, 21/139, 21/140, 21/141, 21/142, 21/143, 21/144, 21/145, 21/146, 21/147, 21/148, 21/149, 21/150, 21/151, 21/152, 21/153, 21/154, 21/155, 21/156, 21/157, 21/158, 21/159, 21/160, 21/161, 21/162, 21/163, 21/164, 21/165, 21/166, 21/167, 21/168, 21/169, 21/170, 21/171, 21/172, 21/173, 21/174, 21/175, 21/176, 21/177, 21/178, 21/179, 21/180, 21/181, 21/182, 21/183, 21/184, 21/185, 21/186, 21/187, 21/188, 21/189, 21/190, 21/191, 21/192, 21/193, 21/194, 21/195, 21/196, 21/197, 21/198, 21/199, 21/200, 21/201, 21/202, 21/203, 21/204, 21/205, 21/206, 21/207, 21/208, 21/209, 21/210, 21/211, 21/212, 21/213, 21/214, 21/215, 21/216, 21/217, 21/218, 21/219, 21/220, 21/221, 21/222, 21/223, 21/224, 21/225, 21/226, 21/227, 21/228, 21/229, 21/230, 21/231, 21/232, 21/233, 21/234, 21/235, 21/236, 21/237, 21/238, 21/239, 21/240, 21/241, 21/242, 21/243, 21/244, 21/245, 21/246, 21/247, 21/248, 21/249, 21/250, 21/251, 21/252, 21/253, 21/254, 21/255, 21/256, 21/257, 21/258, 21/259, 21/260, 21/261, 21/262, 21/263, 21/264, 21/265, 21/266, 21/267, 21/268, 21/269, 21/270, 21/271, 21/272, 21/273, 21/274, 21/275, 21/276, 21/277, 21/278, 21/279, 21/280, 21/281, 21/282, 21/283, 21/284, 21/285, 21/286, 21/287, 21/288, 21/289, 21/290, 21/291, 21/292, 21/293, 21/294, 21/295, 21/296, 21/297, 21/298, 21/299, 21/300, 21/301, 21/302, 21/303, 21/304, 21/305, 21/306, 21/307, 21/308, 21/309, 21/310, 21/311, 21/312, 21/313, 21/314, 21/315, 21/316, 21/317, 21/318, 21/319, 21/320, 21/321, 21/322, 21/323, 21/324, 21/325, 21/326, 21/327, 21/328, 21/329, 21/330, 21/331, 21/332, 21/333, 21/334, 21/335, 21/336, 21/337, 21/338, 21/339, 21/340, 21/341, 21/342, 21/343, 21/344, 21/345, 21/346, 21/347, 21/348, 21/349, 21/350, 21/351, 21/352, 21/353, 21/354, 21/355, 21/356, 21/357, 21/358, 21/359, 21/360, 21/361, 21/362, 21/363, 21/364, 21/365, 21/366, 21/367, 21/368, 21/369, 21/370, 21/371, 21/372, 21/373, 21/374, 21/375, 21/376, 21/377, 21/378, 21/379, 21/380, 21/381, 21/382, 21/383, 21/384, 21/385, 21/386, 21/387, 21/388, 21/389, 21/390, 21/391, 21/392, 21/393, 21/394, 21/395, 21/396, 21/397, 21/398, 21/399, 21/400, 21/401, 21/402, 21/403, 21/404, 21/405, 21/406, 21/407, 21/408, 21/409, 21/410, 21/411, 21/412, 21/413, 21/414, 21/415, 21/416, 21/417, 21/418, 21/419, 21/420, 21/421, 21/422, 21/423, 21/424, 21/425, 21/426, 21/427, 21/428, 21/429, 21/430, 21/431, 21/432, 21/433, 21/434, 21/435, 21/436, 21/437, 21/438, 21/439, 21/440, 21/441, 21/442, 21/443, 21/444, 21/445, 21/446, 21/447, 21/448, 21/449, 21/450, 21/451, 21/452, 21/453, 21/454, 21/455, 21/456, 21/457, 21/458, 21/459, 21/460, 21/461, 21/462, 21/463, 21/464, 21/465, 21/466, 21/467, 21/468, 21/469, 21/470, 21/471, 21/472, 21/473, 21/474, 21/475, 21/476, 21/477, 21/478, 21/479, 21/480, 21/481, 21/482, 21/483, 21/484, 21/485, 21/486, 21/487, 21/488, 21/489, 21/490, 21/491, 21/492, 21/493, 21/494, 21/495, 21/496, 21/497, 21/498, 21/499, 21/500, 21/501, 21/502, 21/503, 21/504, 21/505, 21/506, 21/507, 21/508, 21/509, 21/510, 21/511, 21/512, 21/513, 21/514, 21/515, 21/516, 21/517, 21/518, 21/519, 21/520, 21/521, 21/522, 21/523, 21/524, 21/525, 21/526, 21/527, 21/528, 21/529, 21/530, 21/531, 21/532, 21/533, 21/534, 21/535, 21/536, 21/537, 21/538, 21/539, 21/540, 21/541, 21/542, 21/543, 21/544, 21/545, 21/546, 21/547, 21/548, 21/549, 21/550, 21/551, 21/552, 21/553, 21/554, 21/555, 21/556, 21/557, 21/558, 21/559, 21/560, 21/561, 21/562, 21/563, 21/564, 21/565, 21/566, 21/567, 21/568, 21/569, 21/570, 21/571, 21/572, 21/573, 21/574, 21/575, 21/576, 21/577, 21/578, 21/579, 21/580, 21/581, 21/582, 21/583, 21/584, 21/585, 21/586, 21/587, 21/588, 21/589, 21/590, 21/591, 21/592, 21/593, 21/594, 21/595, 21/596, 21/597, 21/598, 21/599, 21/600, 21/601, 21/602, 21/603, 21/604, 21/605, 21/606, 21/607, 21/608, 21/609, 21/610, 21/611, 21/612, 21/613, 21/614, 21/615, 21/616, 21/617, 21/618, 21/619, 21/620, 21/621, 21/622, 21/623, 21/624, 21/625, 21/626, 21/627, 21/628, 21/629, 21/630, 21/631, 21/632, 21/633, 21/634, 21/635, 21/636, 21/637, 21/638, 21/639, 21/640, 21/641, 21/642, 21/643, 21/644, 21/645, 21/646, 21/647, 21/648, 21/649, 21/650, 21/651, 21/652, 21/653, 21/654, 21/655, 21/656, 21/657, 21/658, 21/659, 21/660, 21/661, 21/662, 21/663, 21/664, 21/665, 21/666, 21/667, 21/668, 21/669, 21/670, 21/671, 21/672, 21/673, 21/674, 21/675, 21/676, 21/677, 21/678, 21/679, 21/680, 21/681, 21/682, 21/683, 21/684, 21/685, 21/686, 21/687, 21/688, 21/689, 21/690, 21/691, 21/692, 21/693, 21/694, 21/695, 21/696, 21/697, 21/698, 21/699, 21/700, 21/701, 21/702, 21/703, 21/704, 21/705, 21/706, 21/707, 21/708, 21/709, 21/710, 21/711, 21/712, 21/713, 21/714, 21/715, 21/716, 21/717, 21/718, 21/719, 21/720, 21/721, 21/722, 21/723, 21/724, 21/725, 21/726, 21/727, 21/728, 21/729, 21/730, 21/731, 21/732, 21/733, 21/734, 21/735, 21/736, 21/737, 21/738, 21/739, 21/740, 21/741, 21/742, 21/743, 21/744, 21/745, 21/746, 21/747, 21/748, 21/749, 21/750, 21/751, 21/752, 21/753, 21/754, 21/755, 21/756, 21/757, 21/758, 21/759, 21/760, 21/761, 21/762, 21/763, 21/764, 21/765, 21/766, 21/767, 21/768, 21/769, 21/770, 21/771, 21/772, 21/773, 21/774, 21/775, 21/776, 21/777, 21/778, 21/779, 21/780, 21/781, 21/782, 21/783, 21/784, 21/785, 21/786, 21/787, 21/788, 21/789, 21/790, 21/791, 21/792, 21/793, 21/794, 21/795, 21/796, 21/797, 21/798, 21/799, 21/800, 21/801, 21/802, 21/803, 21/804, 21/805, 21/806, 21/807, 21/808, 21/809, 21/810, 21/811, 21/812, 21/813, 21/814, 21/815, 21/816, 21/817, 21/818, 21/819, 21/820, 21/821, 21/822, 21/823, 21/824, 21/825, 21/826, 21/827, 21/828, 21/829, 21/830, 21/831, 21/832, 21/833, 21/834, 21/835, 21/836, 21/837, 21/838, 21/839, 21/840, 21/841, 21/842, 21/843, 21/844, 21/845, 21/846, 21/847, 21/848, 21/849, 21/850, 21/851, 21/852, 21/853, 21/854, 21/855, 21/856, 21/857, 21/858, 21/859, 21/860, 21/861, 21/862, 21/863, 21/864, 21/865, 21/866, 21/867, 21/868, 21/869, 21/870, 21/871, 21/872, 21/873, 21/874, 21/875, 21/876, 21/877, 21/878, 21/879, 21/880, 21/881, 21/882, 21/883, 21/884, 21/885, 21/886, 21/887, 21/888, 21/889, 21/890, 21/891, 21/892, 21/893, 21/894, 21/895, 21/896, 21/897, 21/898, 21/899, 21/900, 21/901, 21/902, 21/903, 21/904, 21/905, 21/906, 21/907, 21/908, 21/909, 21/910, 21/911, 21/912, 21/913, 21/914, 21/915, 21/916, 21/917, 21/918, 21/919, 21/920, 21/921, 21/922, 21/923, 21/924, 21/925, 21/926, 21/927, 21/928, 21/929, 21/930, 21/931, 21/932, 21/933, 21/934, 21/935, 21/936, 21/937, 21/938, 21/939, 21/940, 21/941, 21/942, 21/943, 21/944, 21/945, 21/946, 21/947, 21/948, 21/949, 21/950, 21/951, 21/952, 21/953, 21/954, 21/955, 21/956, 21/957, 21/958, 21/959, 21/960, 21/961, 21/962, 21/963, 21/964, 21/965, 21/966, 21/967, 21/968, 21/969, 21/970, 21/971, 21/972, 21/973, 21/974, 21/975, 21/976, 21/977, 21/978, 21/979, 21/980, 21/981, 21/982, 21/983, 21/984, 21/985, 21/986, 21/987, 21/988, 21/989, 21/990, 21/991, 21/992, 21/993, 21/994, 21/995, 21/996, 21/997, 21/998, 21/999, 2200.



Planning Permission No. C/13186/37.F.F./2021  
**APPROVED**  
 Subject to conditions mentioned in this office  
 Letter No. PPT/NS/15(BD)/616/2020 dated 12-2-2021  
 For Member Secretary  
 Chennai Metropolitan Development Authority  
 Chennai - 600 088  
 This approval is valid only after building permit is issued by the concerned Local Body

The Planning Permission issued under New Rules (MCDR, 2019) is subject to final outcome of the WMP (MCDR) of 2019 and WMP (MCDR) No. 69/12 & 69/13 of 2019

SCALE 1: 150

GROUND FLOOR PLAN

Dr. MARAZEENA JOHNSON, B.E., M.A., M.Phil., Ph.D.  
 Managing Trustee  
 Sankarabharathi Institute of Science and Technology Trust

Dr. MARAZEENA JOHNSON, B.E., M.A., M.Phil., Ph.D.  
 Chancellor  
 Sankarabharathi Institute of Science and Technology Deemed University

*[Signature]*  
 Dr. A. SHOBA  
 Structural Engineer Grade - I (SE)  
 SEGR-1/19/06/164  
 No. 80, First Floor, Ethelkammargal Street,  
 Kottur, Chennai - 600 085.

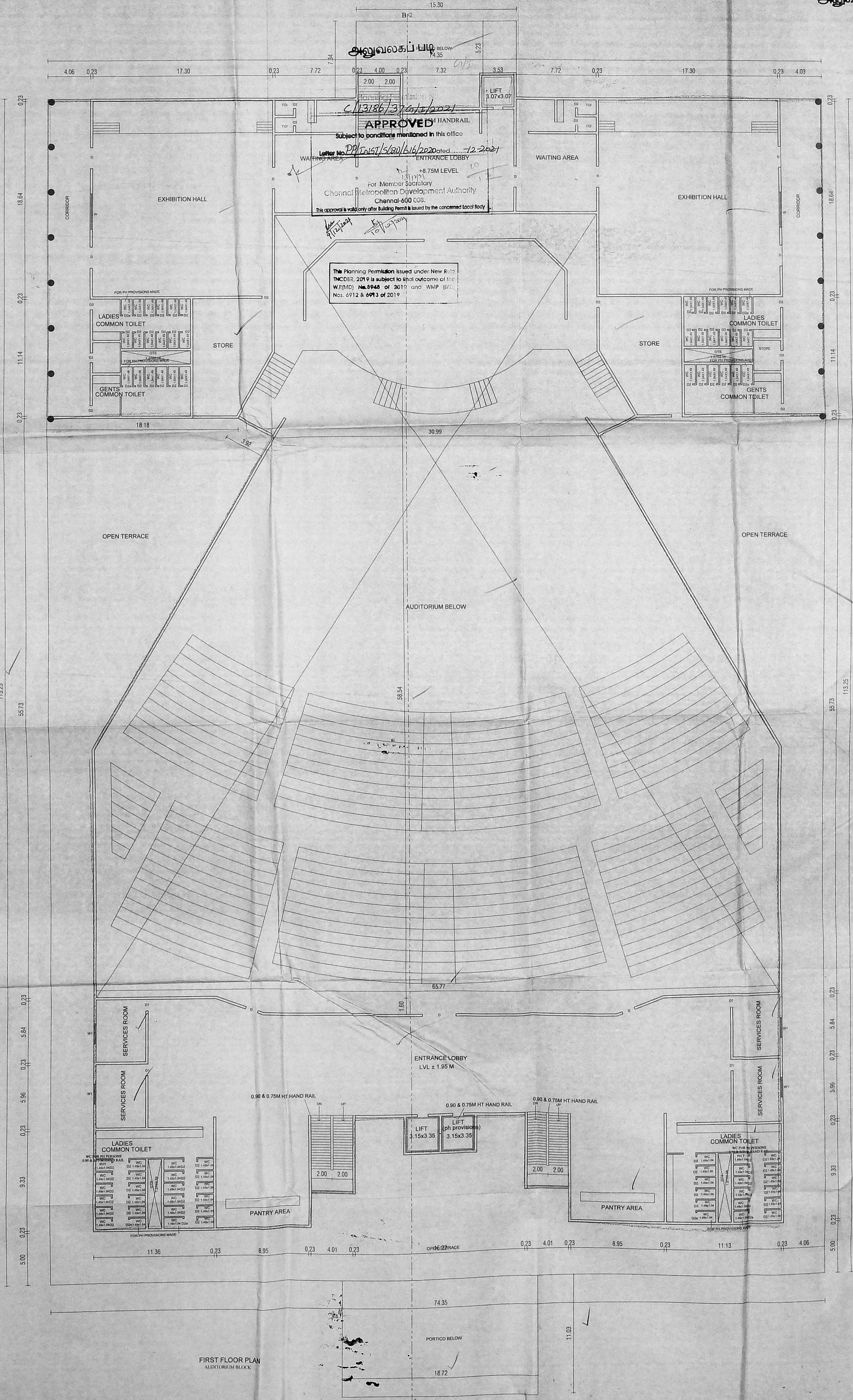
STRUCTURAL ENGINEER

*[Signature]*  
 S. EBIN HARRISON  
 Registered Architect, Gr. (RA)  
 Reg. No: RA/Gr/116/07/203  
 Flat No: 11, Vittal Nagar 2nd,  
 Medapakkam, Chennai - 600 061.

REGISTERED ARCHITECT

GROUND FLOOR PLAN  
 AUDITORIUM BLOCK





REVISED PLAN SHOWING THE PROPOSED CONSTRUCTION OF 2 BLOCKS; SCHOOL BLOCK COMPRISING OF GROUND FLOOR AND FLOORS WITH 15.10M HEIGHT AND AUDITORIUM BLOCK COMPRISING OF GROUND FLOOR + 1ST FLOOR WITH 16.74M HEIGHT AT RAJIVGANDHI SALAI (OLD MAHABALIPURAM ROAD), SEMMANCHERI, CHENNAI COMPRISED IN S.NO. 196, 197/1, 197/2, 200/1, 201, 202/1, 203/2A, 203/3A1, 211/1, 213/1 OF SEMMANCHERY VILLAGE, WITH IN THE LIMIT OF GREATER CHENNAI CORPORATION.

சுவ்வலகப்பலி  
தி. உ.  
16/11/2021  
உ.தி.அ.

The Planning Permission issued under New Rule No. 694B of 2019 is subject to final outcome of the W.P.No. 694B of 2019 and W.P. Nos. 6912 & 6913 of 2019

APPROVED HANDRAIL  
Subject to conditions mentioned in this office  
Letter No. P/15/15/20/16/2021 dated 12.2.2021

For Member Secretary  
Chennai Metropolitan Development Authority  
Chennai-600 083.  
This approval is valid only after Building Permit is issued by the concerned Local Body.

SCALE 1: 150

FIRST FLOOR PLAN

Dr. MARAZEHA JOHNSON, B.E., M.A., Ph.D.,  
Managing Trustee  
Sathyabama Institute of Science and Technology Trust

Dr. MARAZEHA JOHNSON, B.E., M.A., Ph.D.,  
Chancellor  
Sathyabama Institute of Science and Technology Deemed University

OWNER'S SIGNATURE

*A. Shoba*  
Dr. A. SHOBA  
Structural Engineer Grade - (SE)  
REG. No. RA/GR/19007/2003  
No.90, First Floor, Elakhamandal Street,  
Kottur, Chennai-600 085.

STRUCTURAL ENGINEER

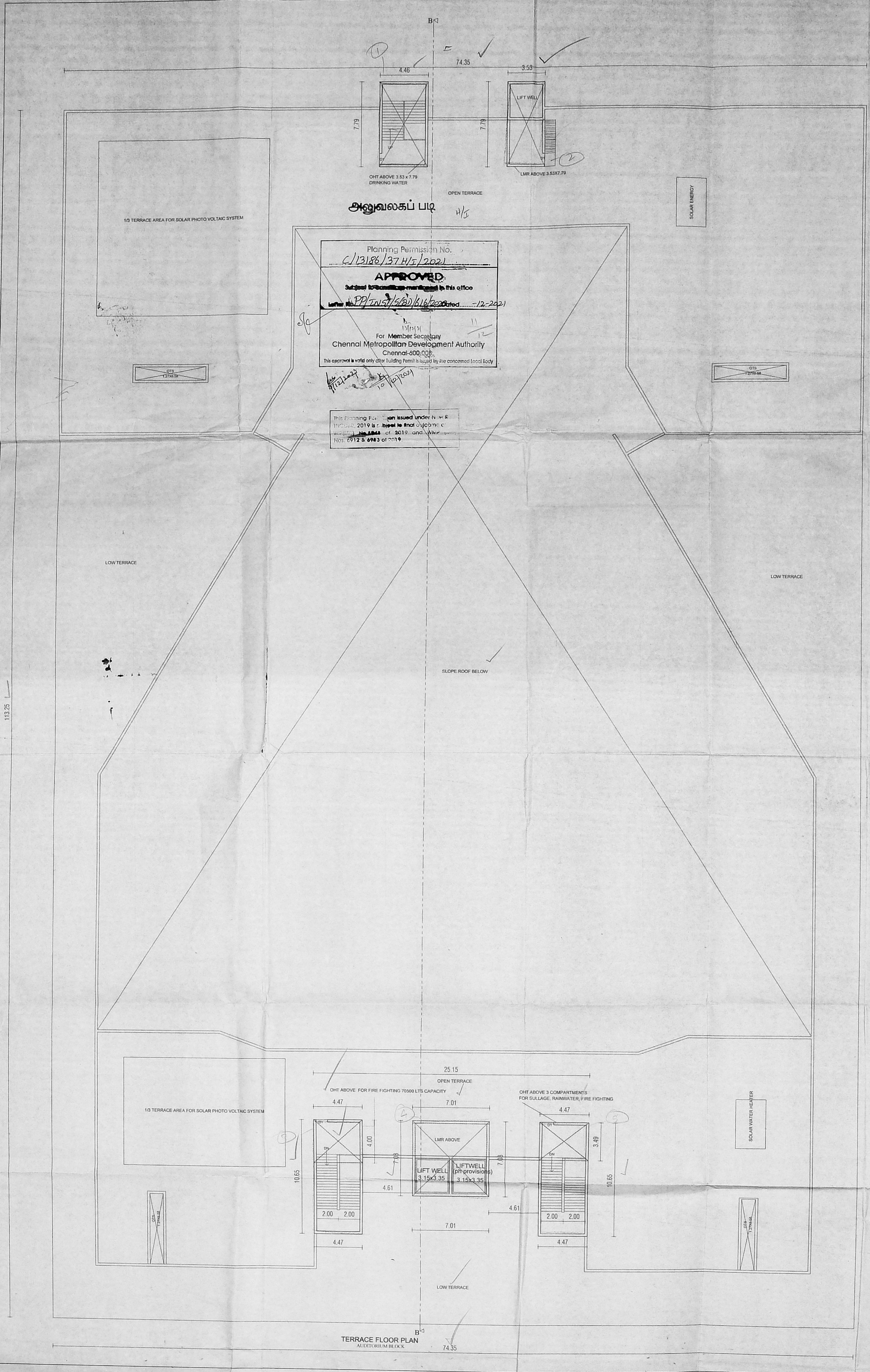
*S. Ebin Harrison*  
S. EBIN HARRISON  
Registered Architect Grade II (RA)  
Reg. No. RA/GA/19007/2003  
Plot No. 11, Vittal Nagar Extn,  
Madipakkam, Chennai - 600 091.  
REGISTERED ARCHITECT

FIRST FLOOR PLAN  
AUDITORIUM BLOCK



REVISED PLAN SHOWING THE PROPOSED CONSTRUCTION OF 2 BLOCKS: SCHOOL BLOCK 9 (11/2021) COMPRISING OF GROUND FLOOR + 3 FLOORS WITH 15.10M HEIGHT AND AUDITORIUM BLOCK COMPRISING OF GROUND FLOOR + 1ST FLOOR WITH 16.74M HEIGHT AT RAJIVGANDHI SALAI (OLD MAHALIPURAM ROAD), SEMMANCHERI, CHENNAI-710911 COMPRISED IN S.NO. 196, 197/1, 197/2, 200/1, 201, 202/1, 203/2A, 203/3A1, 211/1, 213/1 OF SEMMANCHERY VILLAGE, WITH IN THE LIMIT OF GREATER CHENNAI CORPORATION.

சென்னை மாநகராட்சி  
 திட்டம்: P/118/15/06/16/2021  
 தி. உ. 10/11/2021  
 உ.தி.அ. 10/11/21. தி.தி.அ.



Planning Permission No.  
 C/13186/37/H/T/2021  
**APPROVED**  
 Subject to conditions mentioned in this office  
 Letter No. P/118/15/06/16/2021 Dated: 10/11/2021  
 For Member Secretary  
 Chennai Metropolitan Development Authority  
 Chennai-600 005  
 This approval is valid only after Building Permit is issued by the concerned Local Body

This Planning Permission issued under N.W.R. 1973/2019 is subject to final outcome of Writ No. 2843 of 2019 and Writ Nos. 6912 & 6983 of 2019.

TERRACE FLOOR PLAN

Dr. MARAZEENA JOHNSON, B.E., M.B.A., M.P.H., P.A.B.,  
 Managing Trustee  
 Calyphana Institute of Science and Technology Trust

Dr. MARAZEENA JOHNSON, B.E., M.B.A., M.P.H., P.A.B.,  
 Chancellor  
 Calyphana Institute of Science and Technology Doremi University  
 OWNER'S SIGNATURE

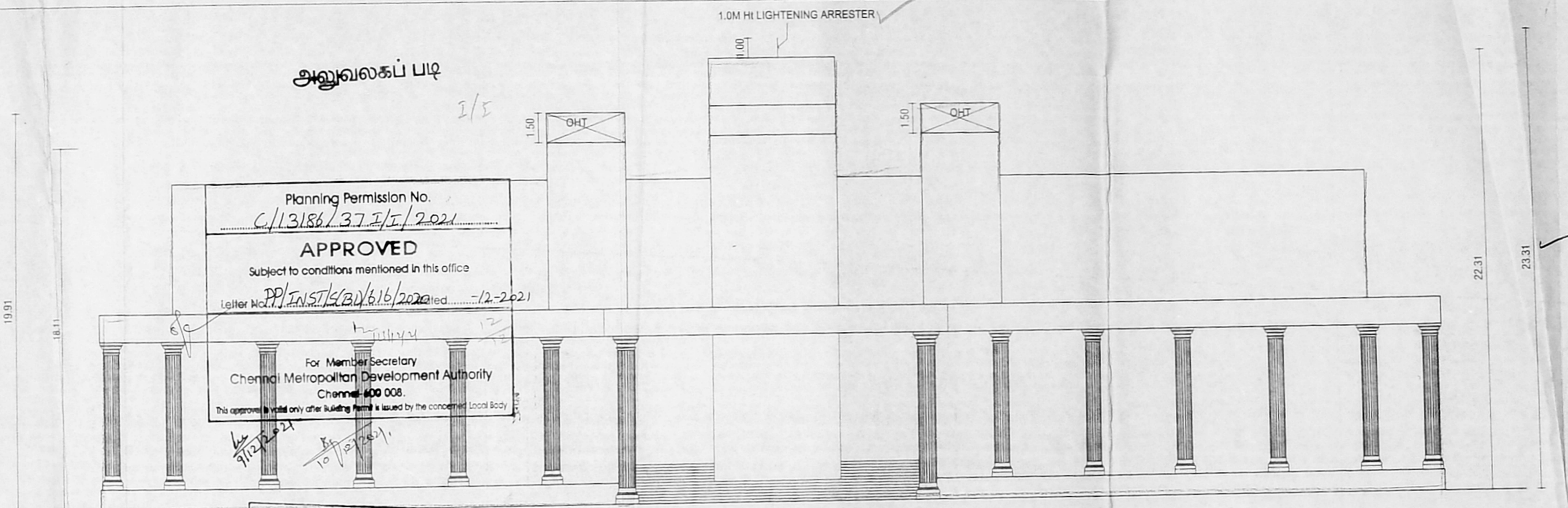
*(Signature)*  
 Dr. A. SHOBA  
 Structural Engineer Grade - (ISE)  
 SEGR-1/19/009/164  
 No.90, First Floor, Elakiammanakal Street,  
 Kottur, Chennai-600 085.

STRUCTURAL ENGINEER

*(Signature)*  
 S. EBIN HARRISON  
 Registered Architect Gr.(RA)  
 Reg. No - RA/GR/19/07/803  
 Plot No - 11, Vishal Nagar Estate,  
 Madipakkam, Chennai - 600 091.

REGISTERED ARCHITECT





அனுவலகப் படி

Planning Permission No.  
C/13186/37 I/E/2021  
**APPROVED**  
Subject to conditions mentioned in this office  
Letter No. PP/INST/CA/616/2021 dated 12-2-2021

For Member Secretary  
Chennai Metropolitan Development Authority  
Chennai-600 008.  
This approval is valid only after Building Permit is issued by the concerned Local Body.

This Planning Permission issued under New Rule TNCDDP, 2019 is subject to final outcome of the W.P.(MD) Nos. 2019 and WMP (MD) Nos. 6912 & 6914 of 2019.

1.0M HI LIGHTENING ARRESTER

ELEVATION  
AUDITORIUM BLOCK

19.91

18.11

22.31

23.31

1.0M HI LIGHTENING ARRESTER

19.91  
18.11  
6.43  
6.76  
1.05/1.90

1.20

1.50 OHT

6.24

8.75

1.42

2.60

OHT 1.50

6.43

6.61

1.05/1.05

19.91

SECTION ON BB  
AUDITORIUM BLOCK

திருத்திய வரைபடம்: III  
நாள்: 9.11.2021

கெ.பெ.வ.கு. (பி) எண்: PP/INST/CA/616/2021  
உதவியாளர்

கோ.நீதாய்வு தி.உ. 16/11/2021

உ.தி.அ. 16/11/21. கு.தி.அ.

அனுவலகப் படி sheet no 99  
REVISED PLAN SHOWING THE PROPOSED CONSTRUCTION OF 2 BLOCKS; SCHOOL BLOCK COMPRISING OF GROUND FLOOR + 3 FLOORS WITH 15.10M HEIGHT AND AUDITORIUM BLOCK COMPRISING OF GROUND FLOOR + 1ST FLOOR WITH 16.74M HEIGHT AT RAJIVGANDHI SALAI (OLD MAHABALIPURAM ROAD), SEMMANCHERI, CHENNAI COMPRISED IN S.NO. 196, 197/1, 197/2, 200/1, 201, 202/1, 203/2A, 203/3A1, 211/1, 213/1 OF SEMMANCHERY VILLAGE, WITH IN THE LIMIT OF GREATER CHENNAI CORPORATION

Dr. MARAZEENA JOHNSON, B.E., M.A., Ph.D., P.A., Managing Trustee  
Kalyanika Institute of Science and Technology Trust

OWNERS SIGNATURE: Dr. MARAZEENA JOHNSON, B.E., M.A., Ph.D., P.A., Chancellor  
Kalyanika Institute of Science and Technology Trust

S. EBIN HARRISON  
Registered Architect (R/A)  
Reg. No.: RA/GR/16/07/303  
Plot No.: 11, Vishal Nagar Estate,  
Madipakkam, Chennai - 600 031.

REGISTERED ARCHITECT

Dr. A. SHOBA  
Structural Engineer Grade - (SE)  
SEGR/19/02/184  
No.00, First Floor, Elakammanthi Street,  
Kottur, Chennai-600 065.

STRUCTURAL ENGINEER